

SCHOOL HOLIDAY PRICE GUIDE 2025-2026: PARIS 17

1 – TAX DEDUCTIONS AND FEES COVERED BY WORK COUNCILS

- a- **50% tax credit** as an out-of-home childcare facility, capped at 3500€ declared per child under 6 per calendar year.
- b- Possibility of fees being covered by a **works council** as a leisure and childcare facility for children.
- c- Possibility of payment by **CESU** (Universal Employment Service Cheque) & **ANCV** (holiday checks).

2 – ‘ALL INCLUSIVE’ PACKAGES

All the School Holiday packages include access to all of our equipment, the activities delivered in English (English Club, yoga kids, arts and crafts, theatre etc.), various French and English workshops, artistic and linguistic workshops, excursions (parks, museums etc.), and a balanced snack for each child (fruit, compote, biscuit etc.) Lunch is provided by our specialist caterer, Ekilibre.

3 – RATES

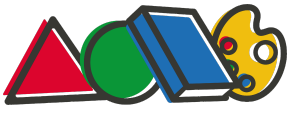
The rates listed in the table below do not take into account any tax deductions.

OPTION	SCHOOL HOLIDAYS 2025-26	PRICE FOR 1 CHILD	PRICE FROM THE 2 ND CHILD (- 25%)
FULL WEEK	From Monday to Friday 8:15am-7pm	399€	299€
WEEK WITH A BANK HOLIDAY (4-DAY WEEK)	From Monday to Friday 8:15am-7pm (excluding bank holiday)	319€	239€
PER DAY	1 day 8:15am-7pm	90€	68€



Rates for children attending *Montessori's Cool*

OPTION	SCHOOL HOLIDAYS 2025-2026	PRICE PER CHILD (-15%)
FULL WEEK	From Monday to Friday 8:15am-7pm	339€
BANK HOLIDAY WEEK (4-DAY WEEK)	From Monday to Friday 8:15am-7pm (excluding bank holiday)	271€
PER DAY	1 day 8:15am-7pm	77€



Summer holidays special discount:

For any registration of 6 days or more, a 5% discount will be applied.

For any registration of 10 days or more, a 10% discount will be applied.

For any registration of 15 days or more, a 15% discount will be applied.

These discounts are only valid upon first reservation. No discount will be given if additional days are reserved at a later date.

4 – CANCELLATION POLICY

All registrations are confirmed upon receipt of payment, or upon validation of the direct debit request.

Only absences justified by a medical certificate will be reimbursed. Without this document, the full amount will be charged.

THE SAKURA EXPERIENCE

Semaine du 20 au 24 avril 2026



8h15 - 9h30

 10h - 10h45

 10h45 - 11h30

 11h30h - 14h30

 14h30 - 15h

 15h - 15h30

 15h30 - 17h30

 17h30 - 18h30

 18h30 - 19h

Monday
TOKYO BLOOMSCAPE

GOOD MORNING

Canvas of Blossoms
 Décoration

English club (*)
 HUNTING GAME

Lunch & Quiet Time

English club (*)
 MATCHING GAME

Tokyo Breeze
 Activité manuelle

Park & Snack

Workshops

BYE BYE FOLKS

Tuesday
SAKURA & PALS

GOOD MORNING

The Great Sushi Lab
 Art

English club (*)
 THEATER

Lunch & Quiet Time

English club (*)
 SPORT

Pond Pals Challenge
 Jeu

Park & Snack

Workshops

BYE BYE FOLKS

Wednesday
PETAL HORIZON

GOOD MORNING

Shimmering Kimono
 Dance

English club (*)
 OBSERVATION GAME

Lunch & Quiet Time

English club (*)
 ART

Wind & Wishes
 Atelier peinture

Park & Snack

Workshops

BYE BYE FOLKS

Thursday
SWEET WAVE WONDERS

GOOD MORNING

Floating Fish Fun
 Jeu

"Tiny Lantern Voyage"
 Sortie Pique-Nique
 11h - 16h

Sweet Sakura Treats
 Atelier cuisine

Park & Snack

Workshops

BYE BYE FOLKS

Friday
FOLD & BLOOM

GOOD MORNING

Cherry Chase Rally
 BIG GAME

Lunch & Quiet Time

English club (*)
 Preparing the party

Origami Oasis
 Boom!

Park & Snack

Movie!

BYE BYE FOLKS

Notes : Planning susceptible d'être modifié. Les activités sont dispensées à la fois en français et en anglais et seront adaptées en fonction de l'âge des enfants inscrits.
 Des temps libres (10/15 min) sont aménagés entre chaque activité. Les activités pourront se dérouler en extérieur selon la météo.
 (*) Lors des ateliers "English Club", les enfants développent leur vocabulaire et compréhension orale à travers des chansons et des jeux liés au thème de la journée.
 Les enfants seront répartis en 2 ou 3 groupes selon leur âge et niveau d'anglais.

TALES OF THE WORLD

Semaine du 27 au 30 avril 2026



8h15 - 9h30
.....
10h - 10h45
.....
10h45 - 11h30

11h30h - 14h30

14h30 - 15h
.....

15h - 15h30
.....
15h30 - 17h30
.....
17h30 - 18h30

18h30 - 19h

Monday STARRY FLIGHT

- GOOD MORNING
- Legendary Wings
Décoration
- English club (*)
HUNTING GAME
- Lunch & Quiet Time
- English club (*)
MATCHING GAME
- Starlight Catchers
Activité manuelle
- Park & Snack
- Workshops

BYE BYE FOLKS

Tuesday TREASURE TOWN TALES

- GOOD MORNING
- Tale Detectives
Jeu
- English club (*)
THEATER
- Lunch & Quiet Time
- English club (*)
SPORT
- Little Sweet Village
Atelier cuisine
- Park & Snack
- Workshops

BYE BYE FOLKS

Wednesday STORYTIME SECRETS

- GOOD MORNING
- Brick House Golf
Jeu
- English club (*)
OBSERVATION GAME
- Lunch & Quiet Time
- English club (*)
ART
- Roar on Stage
Théâtre
- Park & Snack
- Workshops

BYE BYE FOLKS

Thursday ADVENTURE AWAITS

- GOOD MORNING
- Adventure in Legends
BIG GAME
- Lunch & Quiet Time
- English club (*)
Preparing the party
- Heroes Hideout
Boom!
- Park & Snack
- Workshops

BYE BYE FOLKS

Friday 1st May Bank Holiday

CLOSED

Notes : Planning susceptible d'être modifié. Les activités sont dispensées à la fois en français et en anglais et seront adaptées en fonction de l'âge des enfants inscrits. Des temps libres (10/15 min) sont aménagés entre chaque activité. Les activités pourront se dérouler en extérieur selon la météo.
(*) Lors des ateliers "English Club", les enfants développent leur vocabulaire et compréhension orale à travers des chansons et des jeux liés au thème de la journée. Les enfants seront répartis en 2 ou 3 groupes selon leur âge et niveau d'anglais.