

# Pari-Grandir

Centres Ludo-éducatifs Bilingues

## PARIS 7 - ORSAY

At *The Bilingual Montessori School of Paris (BMSP)*

65 quai d'Orsay – PARIS 75007

### PRICE GUIDE

(September 2025 – August 2026)

## HAPPY MERCREDI, AFTER SCHOOL, & HOLIDAYS

### 1 – FEE STRUCTURE

#### a- Annual subscription (10 months: September-June): Happy Mercredis & After school

The annual subscription fees (10 months) have been calculated on the basis of an average of 3.6 school weeks per month during the school year, and therefore remain the same for each month of the school year. We follow the French public school calendar (Zone C). School holidays and bank holidays are not included in the subscription.

The last day of the annual subscription for the 2025-2026 school year is **Friday 26<sup>th</sup> June 2026 inclusive**.

#### b- Cancellation policy

##### **Annual subscriptions**

No reimbursement is agreed in the event of absence for annual subscriptions.

In the event of the termination of an active annual subscription, families must give **3 months' notice** and pay these months in full, no matter the reason for leaving Pari-Grandir. In the event of a family's non-compliance with the rules of the centre, and if a dialogue between the family and Pari-Grandir does not resolve the issue, we reserve the right to terminate the contract at any time.

In the event of termination of the contract before its start date (pre-reservation of a place at Pari-Grandir), families commit to paying the sum equivalent to **2 months' subscription**, corresponding to the reservation of the child's place.

### **One-off sessions**

All registrations are confirmed upon receipt of payment. In the event of a cancellation not justified with a medical certificate at least 48 hours in advance, the full rate will be charged.

### **School holidays**

All registrations are confirmed **definitively** upon receipt of payment, or upon **validation** of the direct debit order by one of the parents/guardians, respecting the deadline specified in the confirmation email.

Only absences justified by a **medical certificate** will be reimbursed. In the absence of this document, the full amount will be charged.

## **2 – 'ALL INCLUSIVE' PACKAGES**

### **a- Happy Mercredis & School Holidays**

All the Happy Mercredi and School Holiday packages include access to all of our equipment, the activities delivered in English (English Club, yoga kids, arts and crafts, theatre etc.), various French and English workshops, artistic and linguistic workshops, excursions (parks, museums etc.), and a balanced snack for each child (fruit, compote, biscuit etc.).

**Lunch** is provided by our specialised caterer, Ekilibre, and carefully selected by us.

### **Afterschool**

The Afterschool packages include a well-balanced snack, participation in our Afterschool activity programme (English Club, arts & crafts, yoga, music, drama, etc.) and access to all of the centre's equipment.

### **b- Children's arrival and departure**

On Wednesdays and during the holidays, the children can be dropped off as soon as the centre opens (8.30am) and up until the beginning of activities (circle time: 9.30am).

Children can be picked up from the centre whenever their parent or guardian wishes, ideally between two activities and up until the centre's closing time (6:00pm).

### 3 – FEES

The fees listed in the table below do not take into account any tax deductions.

## HAPPY MERCREDIS

**Please Note:**

- One-off sessions are only offered within the limit of available places
- (\*) **lunch included** in price

OPTION	HAPPY MERCREDIS	PRICE FOR 1 CHILD
<b>ANNUAL SUBSCRIPTION (10 months)</b>	Every Wednesday 8.30am-6pm (*)	420€ / month (4200€ / year)
	Every Wednesday 8.30am-1.30pm or 12pm-6pm (*)	287€ / month (2870€ / year)
	Every Wednesday 8.30am-12pm or 1.30pm-6pm	222€ / month (2220€ / year)
<b>ONE-OFF SESSIONS</b>	1 Wednesday 8.30am-6pm (*)	124€
	1 Wednesday 8.30am-1.30pm or 12pm-6pm (*)	88€
	1 Wednesday 8.30am-12pm or 1.30pm-6pm	68€

## AFTER SCHOOL

**Please note:**

- One-off sessions are only offered within the limit of available places

OPTION	AFTER SCHOOL (4pm-6pm)	PRICE FOR 1 CHILD
<b>ANNUAL SUBSCRIPTION (10 months)</b>	4 evenings per week until 6pm	319€ / month (3190€ / year)
	1 evening per week until 6pm	125€ / month (1250€ / an)

OPTION	ONE-OFF SESSIONS (4pm-6pm)	PRICE FOR 1 CHILD
<b>4pm-6pm</b>	1 evening 4pm-6pm	44€

## SCHOOL HOLIDAYS

**Please note:**

- (\*) lunch included in price.

OPTION	SCHOOL HOLIDAYS 2025-2026	PRICE FOR 1 CHILD	PRICE FROM THE 2ND CHILD (- 15%)
<b>FULL WEEK</b>	Monday to Friday 8.30am-6pm (*)	595€	506€
<b>PER DAY</b>	1 day 8.30am – 6pm (*)	133€	113€
<b>WEEK WITH A BANK HOLIDAY (4-DAY WEEK)</b> Examples: 25 <sup>th</sup> December, 14 <sup>th</sup> July etc.	Monday to Friday 8:30am-6pm (*)	476€	405€

### Summer holidays special discount

For any registration of 6 days or more, a 5% discount will be applied.

For any registration of 11 days or more, a 10% discount will be applied.

For any registration of 16 days or more, a 15% discount will be applied.

These discounts are only valid upon first reservation. No discount will be given if additional days are reserved at a later date.

#### **4 – TAX DEDUCTIONS & FEES COVERED BY WORKS COUNCILS**

- a- **50% tax credit** as an out-of-home childcare facility, capped at 3500€ declared per child under 6 per year.
- b- Possibility of fees being covered by a works council as a leisure and childcare facility for children.
- c- Possibility of payment by CESU (Universal Employment Service Cheque) & ANCV (holiday cheques).



16h - 18h

# Pari-Grandir's 2025-2026 afterschool activities

4 - 6 pm

The Bilingual  
Montessori School  
of Paris

3 to 5 years old



**MONDAY**  
**ART**

<b>SEP OCT</b>	<b>Modelling Modelage</b>
<b>NOV DEC</b>	<b>Painting and Drawing Peinture et Dessin</b>
<b>JAN FEB</b>	<b>Photography Photographie</b>
<b>MAR APR</b>	<b>Mosaics Mosaïques</b>
<b>MAY JUN</b>	<b>Stamp making Tampons</b>

**TUESDAY**  
**CULTURE  
STEM  
STUDIES**

<b>SEP OCT</b>	<b>Food around the world L'alimentation dans le monde</b>
<b>NOV DEC</b>	<b>Celebrations Fêtes</b>
<b>JAN FEB</b>	<b>Language connection Connexion aux langues</b>
<b>MAR APR</b>	<b>Mythology Mythologie</b>
<b>MAY JUN</b>	<b>Music and Dance Musique et danse</b>

**THURSDAY**  
**SECRETS OF  
STORYTELLING**

<b>SEP OCT</b>	<b>Charlie &amp; the Amazon adventure Charlie et l'aventure amazonienne</b>
<b>NOV DEC</b>	<b>The toy shop gang La bande du magasin de jouets</b>
<b>JAN FEB</b>	<b>The pirate treasure Le trésor des pirates</b>
<b>MAR APR</b>	<b>The birthday party La fête d'anniversaire</b>
<b>MAY JUN</b>	<b>The Australian adventure L'aventure australienne</b>

**FRIDAY**  
**SPORT**

<b>SEP OCT</b>	<b>Movement &amp; coordination Mouvement et coordination</b>
<b>NOV DEC</b>	<b>My favourite sport Mon sport préféré</b>
<b>JAN FEB</b>	<b>Teamwork Travail d'équipe</b>
<b>MAR APR</b>	<b>Energizing games Jeux énergétiques</b>
<b>MAY JUN</b>	<b>Dance, cheer, gymnastics Danse, cheer, gymnastique</b>

16h - 18h

# Pari-Grandir's 2024-2025 afterschool activities

4 - 6 pm

The Bilingual  
Montessori School  
of Paris

6 to 10 years old




**MONDAY**  
**ART**

SEP OCT	Sculpture: Clay Sculpture : Argile
NOV DEC	Spirograph Spirographie
JAN FEB	Origami Origami
MAR APR	Collage Collage
MAY JUN	Printmaking Gravure





**TUESDAY**  
**CULTURE STUDIES**

SEP OCT	Street food Nourriture de rue
NOV DEC	Festive parades Parades festives
JAN FEB	Languages at risk Langues à risque
MAR APR	Ancient beliefs Croyances anciennes
MAY JUN	Puppets and games Marionnettes et jeux




**THURSDAY**  
**SECRETS OF STORYTELLING**

SEP OCT	The Jungle book Le livre de la jungle
NOV DEC	Mystery at the museum Mystère au musée
JAN FEB	Mystery in Arizona Mystère en Arizona
MAR APR	Please, don't come to New York S'il vous plaît, ne venez pas à New York
MAY JUN	The Welsh Ghost Le fantôme gallois




**FRIDAY**  
**SPORT**

SEP OCT	Strength training Entraînement physique
NOV DEC	Exploring Different Sports Découverte de différents sports
JAN FEB	Fair play Fair play
MAR APR	Challenge stations Stations de défi
MAY JUN	Cheerleading Cheerleading



16h - 18h

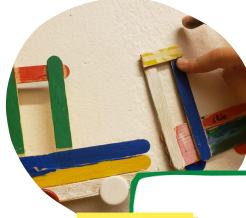
# Extra details!

4 - 6 pm

The Bilingual Montessori School of Paris

3 to 5 years old

Pari-Grandir  
Centres Ludo-éducatifs Bilingues

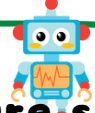


SEP OCT

MONDAY  
**ART**

Why experiment with different art techniques?  
There are so many wonderful ways to be creative artistically, and why not explore them all. Pencil drawings aren't for everyone and neither is clay modelling, but maybe you'll enjoy water colour or lino printing, there's only one way to find out.

NOV DEC



TUESDAY

**Culture studies**

Culture connection  
These activities are playful, hands-on, and designed to foster an appreciation for cultural diversity in young children:  
Dress-Up Day, Music and Dance Exploration, World Food Tasting, Cultural Games, Festivals and Celebrations  
Puppets



Whale day



JAN FEB

THURSDAY  
**Secrets of Storytelling**

ABC melody

With the Hello Kids Readers series, join Charlie & his friends on their fun adventures in London

MAR APR



FRIDAY  
**SPORT**

The joy of movement

We will expose children to various sports in an age-appropriate manner.





16h - 18h

4 - 6 pm

# Extra details!

The Bilingual Montessori School of Paris

6 to 10 years old

Pari-Grandir  
Centres Ludo-éducatifs Bilingues

SEP  
OCT

MONDAY  
ART

## Art prompts

Explore 24 different prompts practising different techniques which you can create countless artworks from.

NOV  
DEC

TUESDAY  
Culture studies

## Culture connection

We will introduce the children to the cultural studies activities that combine fun and learning:  
try new food, play traditional games or dress up for a day!

THURSDAY  
Secrets of  
Storytelling.

MAR  
APR

## My English Factory

My English Factory is a collection of English stories for 6-12 year-olds.

MAY  
JUN

FRIDAY  
SPORT

## Strength workout

Join us for the workout!  
Get ready to exercise while having fun and staying motivated with some hit music!  
feel the heat in your muscles build!

